

# SUMMER EXHIBITION 2020

CURATED BY NICKY & ROBERT WILSON, JUPITER ARTLAND

*Looking through the extraordinary collection of submissions, we can only think that in a time where we need resilience and strength, thank goodness the creative spirit is there to be our Muse. This is a summer show, after not only a pandemic, but also the questioning and holding to account of our society and its attitudes to race. On top of that, there are dire warnings about both the economy and the environment. The artist is now more than ever vital in the role of emissary, their work will not be untouched by these circumstances and the selection of this show exists within this reality.*

*The artists' work on show mirror these concerns with exuberant and purposeful statements, whilst questioning the world around us. Some of the works are very small and these pieces have been placed together - a collection of curiosities by different hands. The intimacy of the table; simple, humble, without pretence. Perhaps this is our new reality, naked, stripped bare but we remain resolutely hopeful, and that hope is borne from the power of art to challenge and cajole, or maybe midwife clear blue sky thinking. Art will provide nourishment to our bruised souls..*

**Nicky and Robert Wilson**

1.



## MILLIE LAING-TATE

### CLOUD SHOES

Felt, thread and cotton on foam

NFS

2.



## HELEN BARFF

### STACK

Jesmonite

£4000

3.



## CLARE BURNETT

### THE WOES

Copper and wood

£2400

4.



## JANE MORGAN

THE BRAMBLE

Bronze (copper and selenium) patinated  
NFS

5.



## LISA SNOOK

BREAST

Porcelain, butterflies

£2600

6.



## JILL GIBSON

UNDER PRESSURE

Cast foam, Basque fired clay

£750

7.



## SUSIE OLCZAK

CHAIN REACTION

Mixed media

£1500

8.



## TERRY JONES

SEVEN FROM ELEVEN

Bronze and iron

£7000

9.



## AMY STEPHENS

BENABBIO

Polaroid, wood, paint, flock,  
branch, tape

£2400

10.



## LYNN DENNISON

WASH YOUR HANDS

Perfumed soap, cardboard box

£700

11.



## LINDA HUBBARD

A BOX FULL OF DARKNESS, EMPIRE  
WINDRUSH

Cardboard box, photograph, wooden  
emoji, black paint

£200

12.



## EMMA ELLIOTT

THE SACRED AND THE PROFANE

Bronze, marble, rubber, (glass vitrine).

£8850

13.



### ALEX DAVIES

WANT & ABLE

PLA print and steel

£750

14.



### LINDA HUBBARD

FAMILY SNAPS: AUNTY MARY'S NORMAN WISDOM TOAST APPARITION

Cardboard, old newspaper, a piece of toast, oil paint

£300

15.



### JANE MORGAN

POT TO PISS IN

Bronze, oil, acrylic, matt lacquer £9600

16.



### KAREN TANG

MAX GROWTH BLING

Nike Air Max 90 trainer, plywood, steel, Mapei coloured grout, crystalacal lamina, fibreglass, fimo, jewellery, imitation plants, fruit packaging net

£950

17.



### LUCY BARLOW

SEWING AN ICEBERG

Greaseproof paper, thread, light

£4500

18.



### ROS BURGIN

CHANGE COMES FROM WITHIN

Argon gas, electricity, glass tubing, clear acrylic

£3800

19.



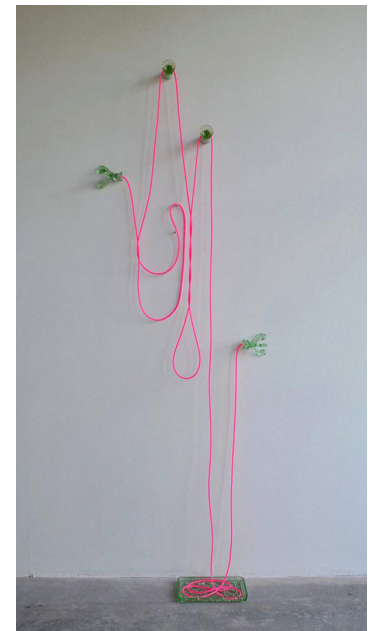
### MADI ACHARYA-BASKERVILLE

LIFE'S A BITCH AND THEN YOU THRIVE

Mixed media sculpture

£2500

20.



### JULIE BRIXEY-WILLIAMS

WHAT COMES AROUND

1930s green Uranium glass, silicone tubing

£2070





**CARO WILLIAMS**

**I QUESTION SOFTLY WHY I FAILED**  
Laser-cut brass text, chain, carpet

£1500



**DENISE BRYAN**

**BECOMING LANDSCAPE**

Wood, MDF, fabric, Pavapol (fabric stiffener)

£POA



**ROSIE LEVENTON**

**THE MASTIFF**

Plaster polymer, mesh, 3D print, copper cable

£2000

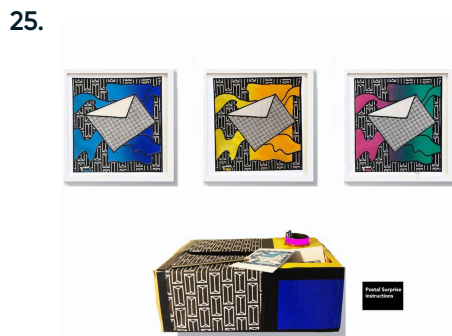


**ELENA GILEVA**

**PILLAR**

Glazed stoneware, CNC milled birch plywood

NFS

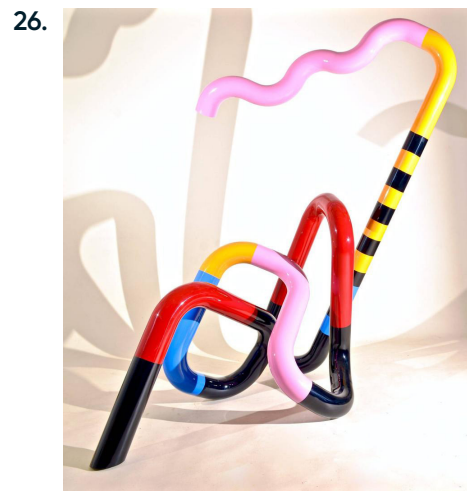


**JULIA VOGL**

**POSTAL SURPRISE - A SOCIAL/ PARTICIPATORY SCULPTURE**

3 framed silkscreen prints and box with up to 240+ participatory cards and 240 take away pens.

Prints: £110 unframed, £142 framed (= 100 world postcard stamps) (3 Prints edition of 5 each, so 15 total prints) POA if buying all 3 prints



**SAM SHENDI**

**FREQUENCY**

Stainless steel

£14000

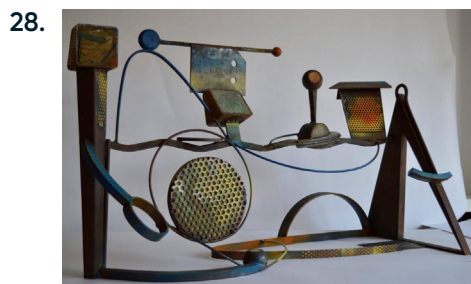


**HEYWOOD & CONDIE**

**WILDSTYLE WORK NO. 23 SERIES OF EXPERIMENTAL NATURAL SCULPTURAL GRAFFITI TAGS FOR URBAN SETTINGS**

Plants, irrigation pipe, tape, local bricolage

£2860



**JANE ACKROYD**

**MARCELLO TAKES US TO SA TUNA JAZZ**

Steel, plaster, paint, wax

£4500



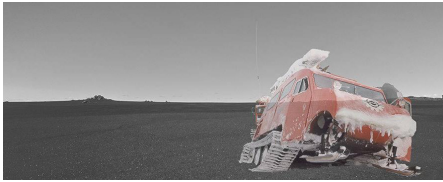
**GUDRUN NIELSEN**

**OFF TO SUBGLACIAL ESJUMOUNTAIN VOLCANO 1977 / JÖKULHEIMA BARREN WASTELAND,**

Iceland 2019, Photography/collage

£600

30.



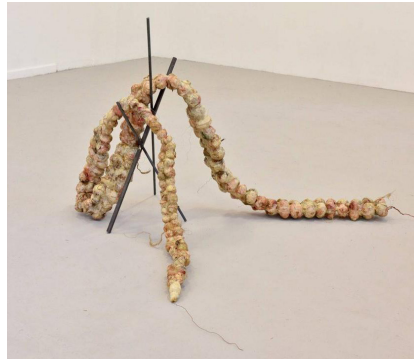
### GUDRUN NIELSEN

STUCK IN A GLACIER CRACK 1977 /  
JÖKULHEIMA BARREN WASTELAND,  
ICELAND 2019

Iceland 2019, Photography/collage

£600

31.



### FIONA CAMPBELL

ACCRETION

Recycled and found materials

£4900

32.



### ELPIDA HADZI- VASILEVA

BEAUTY EXPOSED III

Sheep stomach, pig intestine, turned  
wood, Perspex

£5600

## ON THE SCULPTURE TERRACE



Caroline Achaintre's Echo Peel is currently on display on the sculpture terrace. Described by the artist as a "fragile but also a protective layer", this work was created in 2019 but has gained extra meaning as we adjust to wearing face coverings in our daily lives.

The response to Echo Peel has been amazing! We're excited to launch our wearable art masks featuring the vibrant colours and pattern of Caroline Achaintre's work, currently on show on the sculpture terrace.

Safe and stylish, our make-your-own masks are easy to put together.

No sewing required!

Mask-making  
kits cost £4

33.



### KARI ANNE HELLEBERG BAHRI

LAG  
Textile

£3000